



*jordan fishwick*

Buxton Road Newtown, Disley Stockport

**Buxton Road Newtown, Disley  
Stockport SK12 2RA**

**Guide Price £225,000**



**The Property**

This spacious and attractive two-bedroom end-terrace home is a must-see! Offering generous, flexible living space arranged across three floors and superbly situated close to Newtown railway station, providing a direct rail connection to Manchester Piccadilly. The property combines style with practicality. The home benefits from PVC double glazing and gas central heating, and the accommodation briefly comprises: an open-plan living and sitting room, a lower ground floor breakfast kitchen, WC/utility and boiler room. To the first floor are two well-proportioned bedrooms along with a stylish, recently updated bathroom. Outside, there is a charming walled garden finished with Indian stone paving, creating an ideal low-maintenance outdoor space. An excellent opportunity for first-time buyers looking for a move-in ready home in a convenient location.




- Superb End Of Terrace
- Three Floors Of Accomodation
- Open Plan Living Space
- Two Bedrooms
- Open Plan Dining Kitchen
- Close Proximity to Newtown Station
- Enclosed Rear Garden
- Convenient Location

**Postcode** SK12 2RA

**EPC Rating** D

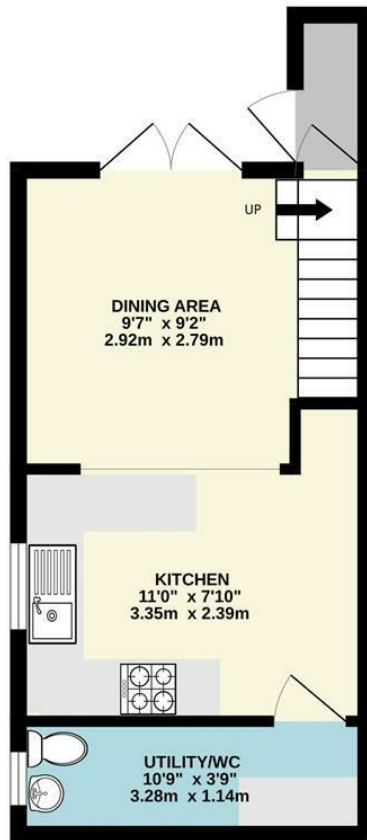
**Local Authority** Cheshire East

**Council Tax** B

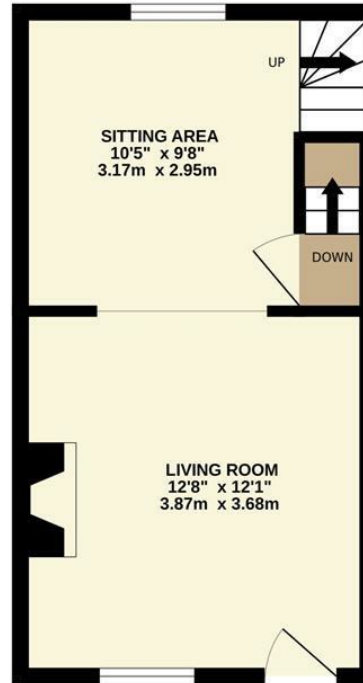
Energy Efficiency Rating		Current	Potential
Very energy efficient - lower running costs			
(92 plus)	A		
(81-91)	B		87
(69-80)	C		
(55-68)	D	58	
(39-54)	E		
(21-38)	F		
(1-20)	G		
Not energy efficient - higher running costs			
<b>England &amp; Wales</b>		EU Directive 2002/91/EC 	



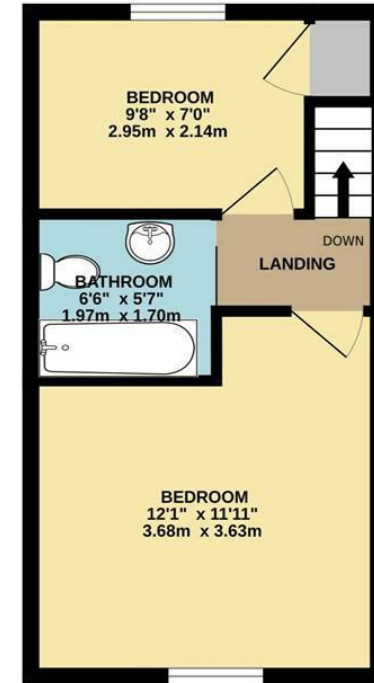
BASEMENT



GROUND FLOOR



1ST FLOOR



Whilst every attempt has been made to ensure the accuracy of the floorplan contained here, measurements of doors, windows, rooms and any other items are approximate and no responsibility is taken for any error, omission or mis-statement. This plan is for illustrative purposes only and should be used as such by any prospective purchaser. The services, systems and appliances shown have not been tested and no guarantee as to their operability or efficiency can be given.  
Made with Metropix ©2026



These particulars are believed to be accurate but they are not guaranteed and do not form a contract. Neither Jordan Fishwick nor the vendor or lessor accept any responsibility in respect of these particulars, which are not intended to be statements or representations of fact and any intending purchaser or lessee must satisfy himself by inspection or otherwise as to the correctness of each of the statements contained in these particulars. Any floorplans on this brochure are for illustrative purposes only and are not necessarily to scale.

Offices at: Chorlton, Didsbury, Disley, Hale, Glossop, Macclesfield, Manchester Deansgate, Manchester Whitworth Street, New Mills, Sale, Wilmslow and Withington

14 Market St, Disley, Cheshire, Stockport SK12 2AA

01663 767878

disley@jordanfishwick.co.uk

www.jordanfishwick.co.uk